

**SPECIFICATIONS**

Rated (额定参数): 300V,12A  
 Dielectric strength(抗电强度): AC2500V/1 Minute  
 Insulation Resistance(绝缘电阻):1000MΩ Min  
 Contact Resistance(接触电阻):20mΩ Max  
 Screw Torque(扭矩): 0.5Nm (4.4lb.in)  
 Wire Range(线径):14~22AWG  
 Strip length(剥线长度):4.5~5mm  
 Temp. range(操作温度): -40℃~+105℃  
 MAX Soldering(瞬时温度):+250℃,5s

Housing Material(塑件): PA66 (UL94 V-0)  
 Contact(端子): Brass, Tin plating(黄铜镀锡)  
 Wire protector(弹片): Bronze(磷铜), Ni plating(镀镍)  
 Screw (螺丝): M3.0, Steel, Zinc plating(钢,镀锌)

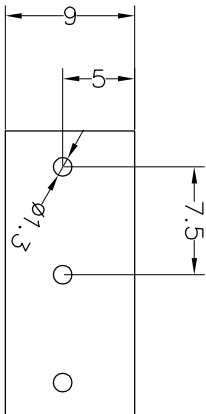
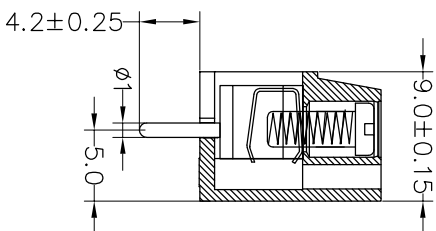
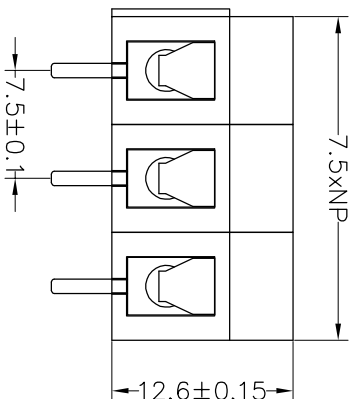
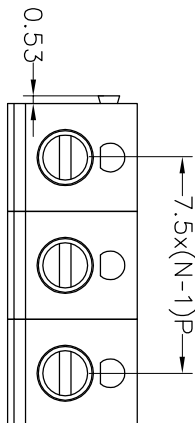
PITCH RANGE		NOMINAL DIMENSION RANGE	
IN MM	OVER	IN MM	OVER
TO 6	10	30	60
TO 10	24	TO 30	TO 100
TO 10	24	60	100
±0.10	±0.15	±0.30	±0.30
		±0.30	±0.50
			±0.70
			±1.00

**Ordering Information**

**JL 300 - 750 XX U X 1**

Pitch 750=7.5PH  
 No. of pins 2P~12P  
 Housing Color  
 B=Black  
 G=Green  
 U=Blue  
 R=Red  
 W=White  
 Y=Yellow  
 O=Orange  
 F=Grey


Packing  
 0=Pe bag  
 T=Tube  
 A=Troy



Recommended P.C.B Layout(Top Side)

OPERATION		DRAW	BEN	17.01.04
XX	±0.30			
X:XX	±0.20	CHECK		
X:XXX	±0.10			
Angle	±3°	APPROVE		
DIM	TOL			

SCALE	FIT
UNIT	mm
SIZE	A4
SHEET	1/1
PROU.	

**JINL**  **深圳市锦凌电子有限公司**  
 SHENZHEN JINLING ELECTRONIC CO.,LTD  
 Tel: 86-755-2997-5806/5802 Fax: 86-755-2997-5992

PART NO. JL300-750XXUX1  
 TITLE: 7.50mm Terminal Blocks Female 180°

REV	DATE	MODIFICATION DESCRIPTION	CHANGE
A0	2017.01.04	NEW DRAWING	
1			