

SPECIFICATIONS

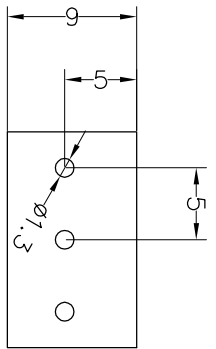
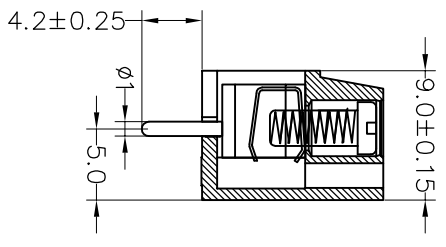
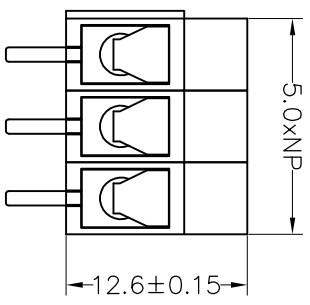
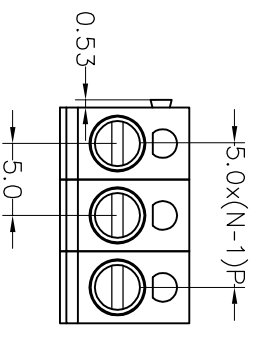
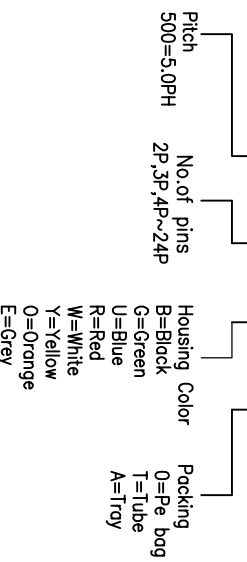
Rated (额定参数): 300V, 12A
 Dielectric strength (抗电强度): AC2000V/1 Minute
 Insulation Resistance (绝缘电阻): 1000MΩ Min
 Contact Resistance (接触电阻): 20mΩ Max
 Screw Torque (扭矩): 0.5Nm (4.4lb.in)
 Wire Range (线径): 14~22AWG
 Strip length (剥线长度): 4.5~5mm
 Temp. range (操作温度): -40°C~+105°C
 MAX Soldering (瞬时温度): +250°C, 5s

Housing Material (塑件): PA66 (UL94 V-0)
 Contact (端子): Brass, Tin plating (黄铜镀锡)
 Wire protector (弹片): Bronze (磷铜), Ni plating (镀镍)
 Screw (螺丝): M3.0, Steel, Zinc plating (钢, 镀锌)

PITCH RANGE IN MM	NOMINAL DIMENSION RANGE IN MM					
	OVER	OVER	OVER	OVER	OVER	OVER
TO 6	10	TO 10	30	TO 60	TO 100	OVER 150
TO 10	24	TO 30	60	TO 100	TO 150	OVER 150
±0.10	±0.15	±0.25	±0.30	±0.30	±0.50	±0.70
						±1.00

Ordering Information

JL 300 - 500 XX U X 1



Recommended P.C.B Layout(Top Side)

OPERATION		DRAW		BEN		SCALE		FIT		TITLE:	
XX	±0.30				17.01.04	UNIT	mm		1/1	PART NO.	
X:XX	±0.20	CHECK				SIZE	A4		1/1	JL300-500XXUX1	
X:XXX	±0.10					SHEET					
Angle	±3'	APPROVE				PROJ.					
DIM	TOL										
CHANGE		5		6		7		8		9	
DATE		MODIFICATION DESCRIPTION		CHANGE		APPROVE		TITLE:		5.0mm Terminal Blocks Female 180°	
REV	DATE	NEW DRAWING									
A0	2017.01.04										

JIN 深圳市锦凌电子有限公司
 SHENZHEN JINLING ELECTRONIC CO.,LTD
 Tel: 86-755-2997-5806/5802 Fax: 86-755-2997-5992